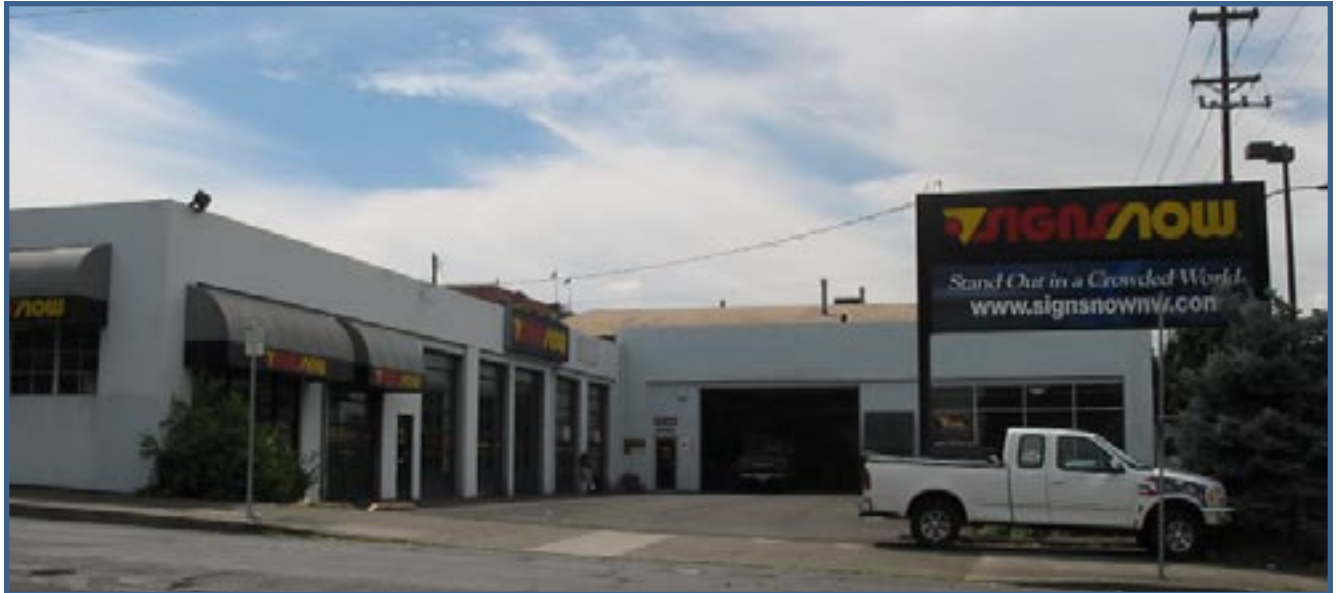


For Sublease

Close-in SE Freestanding Building Commercial - Industrial -Service



**1100-1130 SE Martin Luther King Blvd.
SE MLK and SE Taylor**

Property Description

Lot Size:	20,000 SF with 6,500 SF of parking
Building Size:	13,500 SF - will divide down to 10,000 SF
Loading:	7 grade level doors
Office/Showroom:	Approximately 2,400 SF plus additional shop offices and mezzanine storage
Zoning:	EXd - Central Employment - City of Portland The intent of the zone is to allow industrial and commercial uses which need central location.

Terms

Lease Rate:	\$11,250 per month NNN (\$10.00 SF Annual) NNN estimated at \$.125 per SF (\$1,665.00 per month) Master Lease expires May 31, 2011
-------------	--

Comments

- Neighbors include Platt Electric, Rodda Paint, Parker Paint, Rejuvenation, and Arvey Paper.

For additional information, contact:
Michael D. Vandenburg, SIOR
1800 SW First Ave., Ste. 100, Portland, OR 97201
503.227.2500 / Fax 503.274.8216
www.macadamforbes.com



Worldwide Real Estate Services